



**Lower Street, Rugby, Warwickshire**  
**Asking Price £140,000**

crowhurst  
gale



# Lower Street, Rugby, Warwickshire

Crowhurst Gale is pleased to present this one bedroom house Situated On The Exclusive Development Of Lowry Court, Set In The Desirable Location Of Hillmorton. The property comprises of Open plan Kitchen/lounge with fitted appliances. On the first floor, bedroom one and the main bathroom. The property also benefits from gas central heating, triple glazing and an allocated parking space. NO UPWARD CHAIN

## Entrance

Open Plan Lounge/Kitchen 16'5" x 13'5" - (5.02m x 4.11m -)

Bedroom One 13'6" x 9'6" - (4.12m x 2.90m -)

Bathroom 6'11" x 6'7" (2.12m x 2.01m )

## Outside Communal Gardens

Maintained Gardens lighting and pathways

## Allocated Parking Space



### Market Appraisal

If you are considering selling your property, we would be delighted to give you a free no obligation market appraisal. Our experience, knowledge and marketing with local and internet advertising will get your property seen and stand out from the crowd. Please contact us to arrange your property appraisal.

### Conveyancing Services

Our solicitors work on a no sale, no fee basis. They work longer hours than the conventional solicitor and are available weekends. Please contact us for more information on our conveyancing services.

### Directions For Sat Nav

Directions For Sat Nav:

### Local Authority

Rugby Borough Council

### Mortgage Services

Crowhurst Gale can offer Panda Mortgage Services for professional mortgage advice and will help to find the right product that will suit your budget and needs from virtually the whole of the mortgage market.

### Mortgage Services

Crowhurst Gale can offer Panda Mortgage Services for professional mortgage advice and will help to find the right product that will suit your budget and needs from virtually the whole of the mortgage market.

### Tax Band

Tax Band: A

### Tenure

Leasehold

### Viewing

By appointment only through Crowhurst Gale Estate Agents  
01788 522266

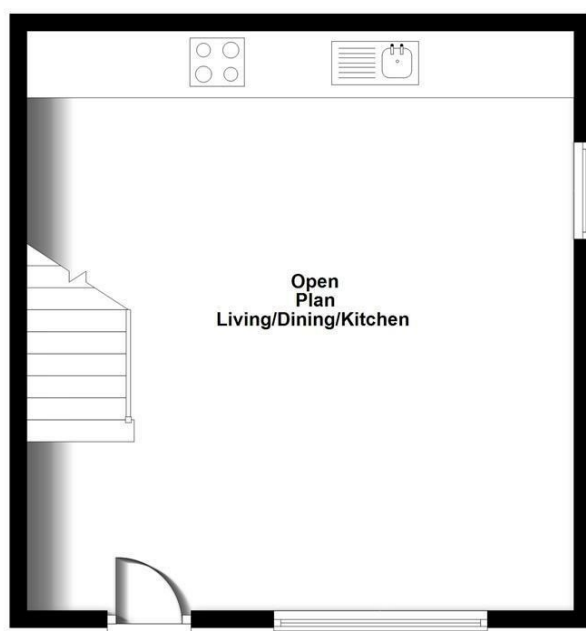
### Service Charge & Ground Rent

Service Charge & Ground Rent £133 monthly - paid up until Dec 2026

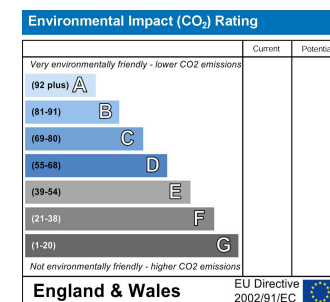
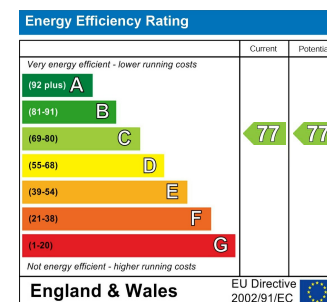
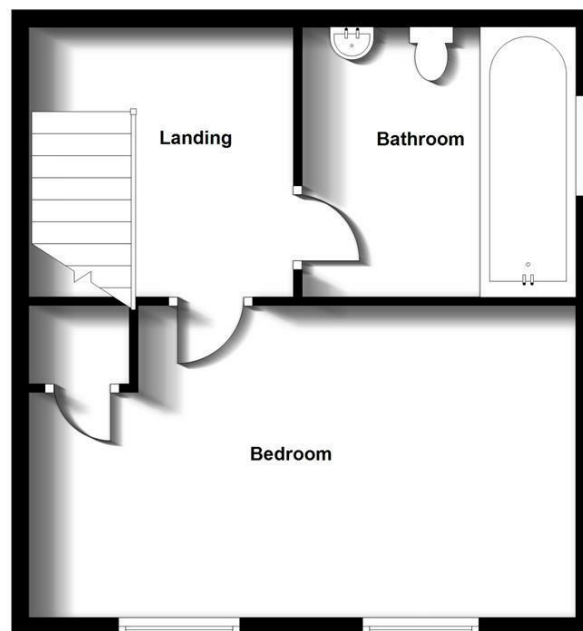




Ground Floor



First Floor



31 The Green, Bilton, Rugby, Warwickshire, CV22 7LZ  
 Tel: 01788 522 266  
 property@crowhurst-gale.co.uk  
 www.crowhurst-gale.co.uk

